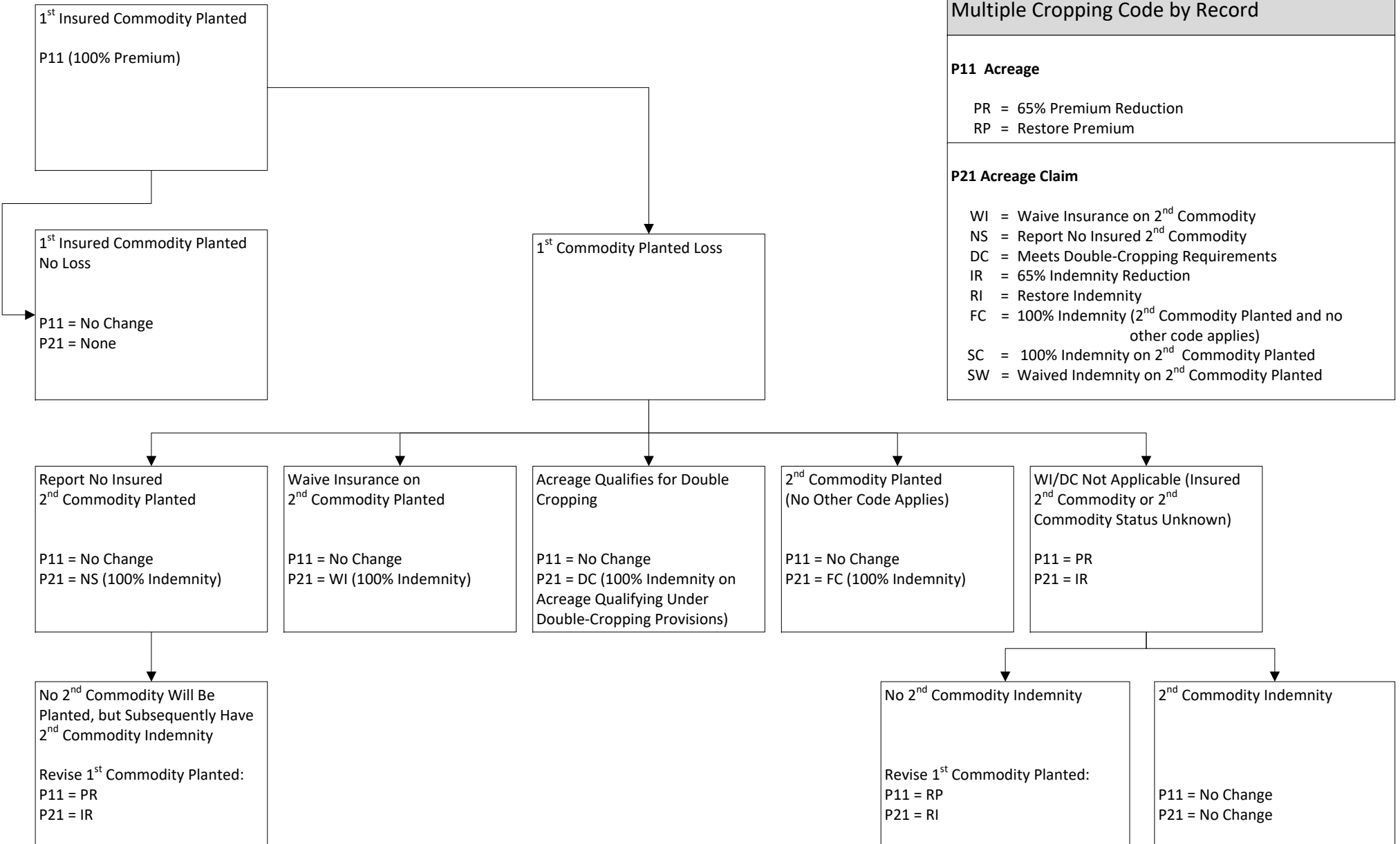


**Exhibit Name:** Commodity Processing Flow Diagram  
**Exhibit Number:** P11-2  
**Record Name:** Acreage  
**Record Code:** P11

**Reinsurance Year:** 2022  
**Version:** Approved  
**Release Date:** 7/1/2021

First Commodity Processing (Planted Acreage)

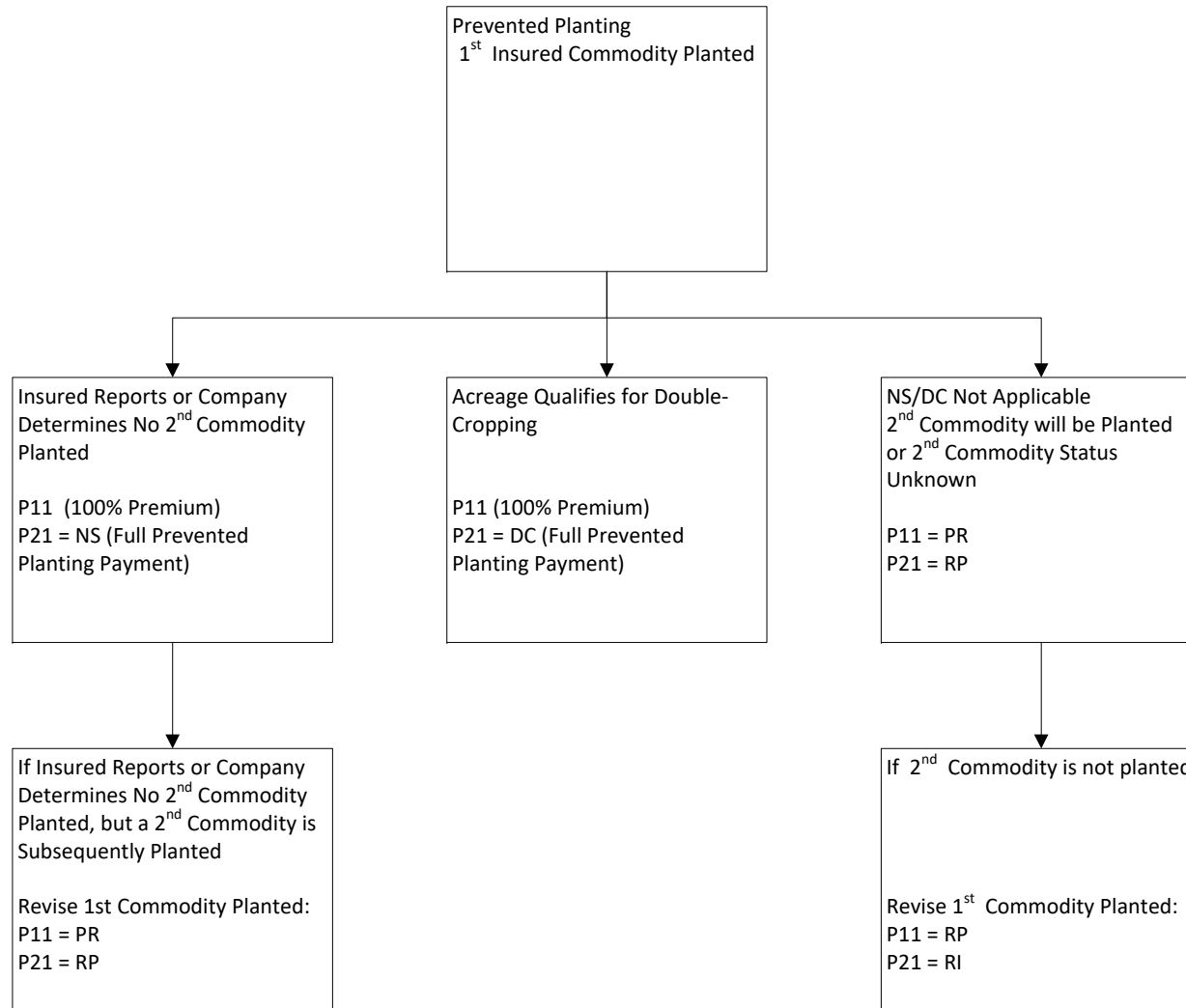
Multiple Cropping Code by Record
<b>P11 Acreage</b>  PR = 65% Premium Reduction RP = Restore Premium
<b>P21 Acreage Claim</b>  WI = Waive Insurance on 2 <sup>nd</sup> Commodity NS = Report No Insured 2 <sup>nd</sup> Commodity DC = Meets Double-Cropping Requirements IR = 65% Indemnity Reduction RI = Restore Indemnity FC = 100% Indemnity (2 <sup>nd</sup> Commodity Planted and no other code applies) SC = 100% Indemnity on 2 <sup>nd</sup> Commodity Planted SW = Waived Indemnity on 2 <sup>nd</sup> Commodity Planted



**Exhibit Name:** Commodity Processing Flow Diagram  
**Exhibit Number:** P11-2  
**Record Name:** Acreage  
**Record Code:** P11

**Reinsurance Year:** 2022  
**Version:** Approved  
**Release Date:** 7/1/2021

First Commodity Processing (Prevented Planted Acreage)



**Exhibit Name:** Commodity Processing Flow Diagram  
**Exhibit Number:** P11-2  
**Record Name:** Acreage  
**Record Code:** P11

**Reinsurance Year:** 2022  
**Version:** Approved  
**Release Date:** 7/1/2021

Second Commodity Planted Processing (Planted Acreage)

