

First Commodity Processing (Planted Acreage)

Multiple Cropping Code by Record
P11 Acreage PR = 65% Premium Reduction RP = Restore Premium
P21 Acreage Claim WI = Waive Insurance on 2 nd Commodity NS = Report No Insured 2 nd Commodity DC = Meets Double-Cropping Requirements IR = 65% Indemnity Reduction RI = Restore Indemnity FC = 100% Indemnity (2 nd Commodity Planted and no other code applies) SC = 100% Indemnity on 2 nd Commodity Planted SW = Waived Indemnity on 2 nd Commodity Planted

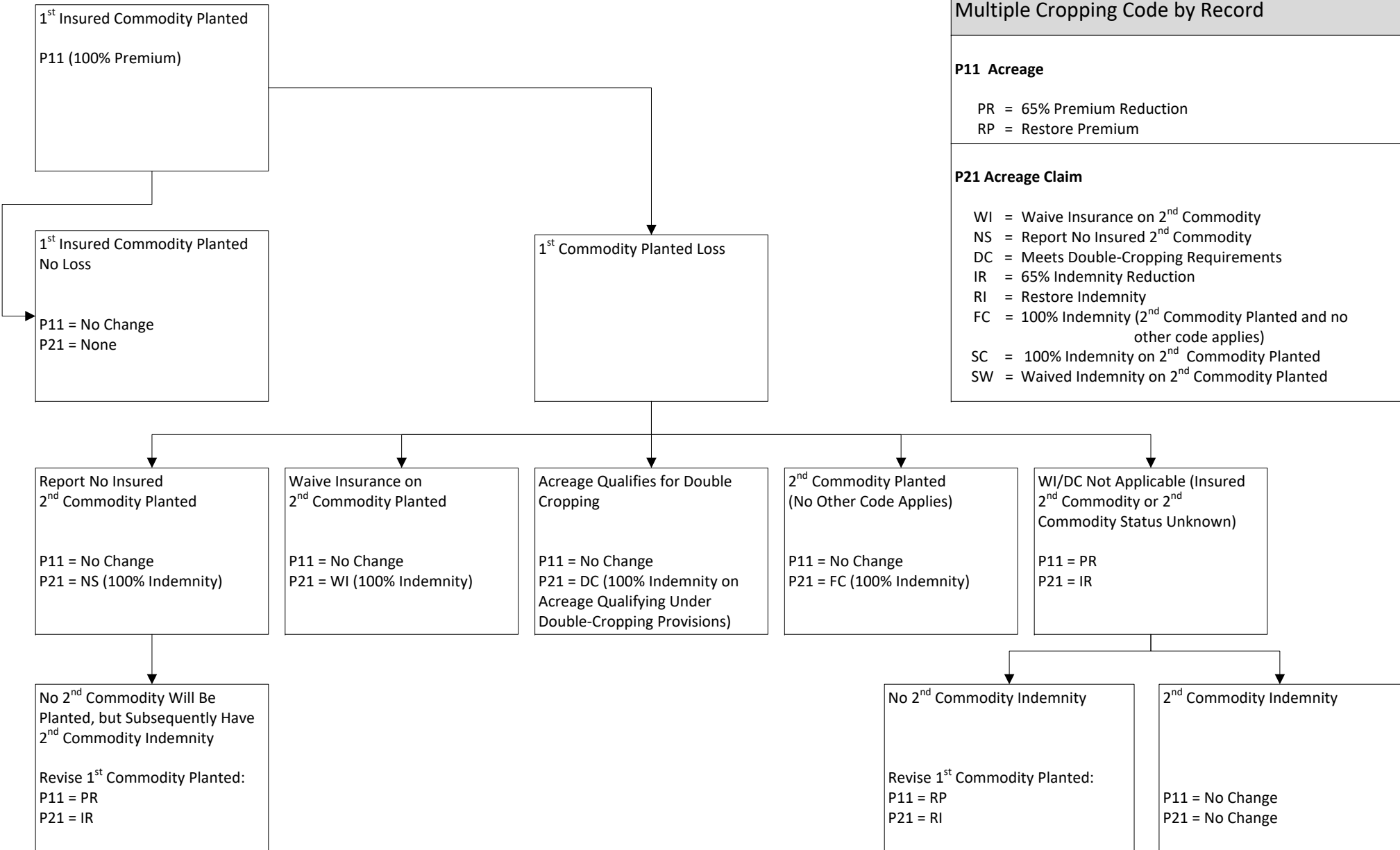


Exhibit Name: Commodity Processing Flow Diagram
Exhibit Number: P11-2
Record Name: Acreage
Record Code: P11

Reinsurance Year: 2014
Version: Approved
Release Date: 9/27/2018

First Commodity Processing (Prevented Planted Acreage)

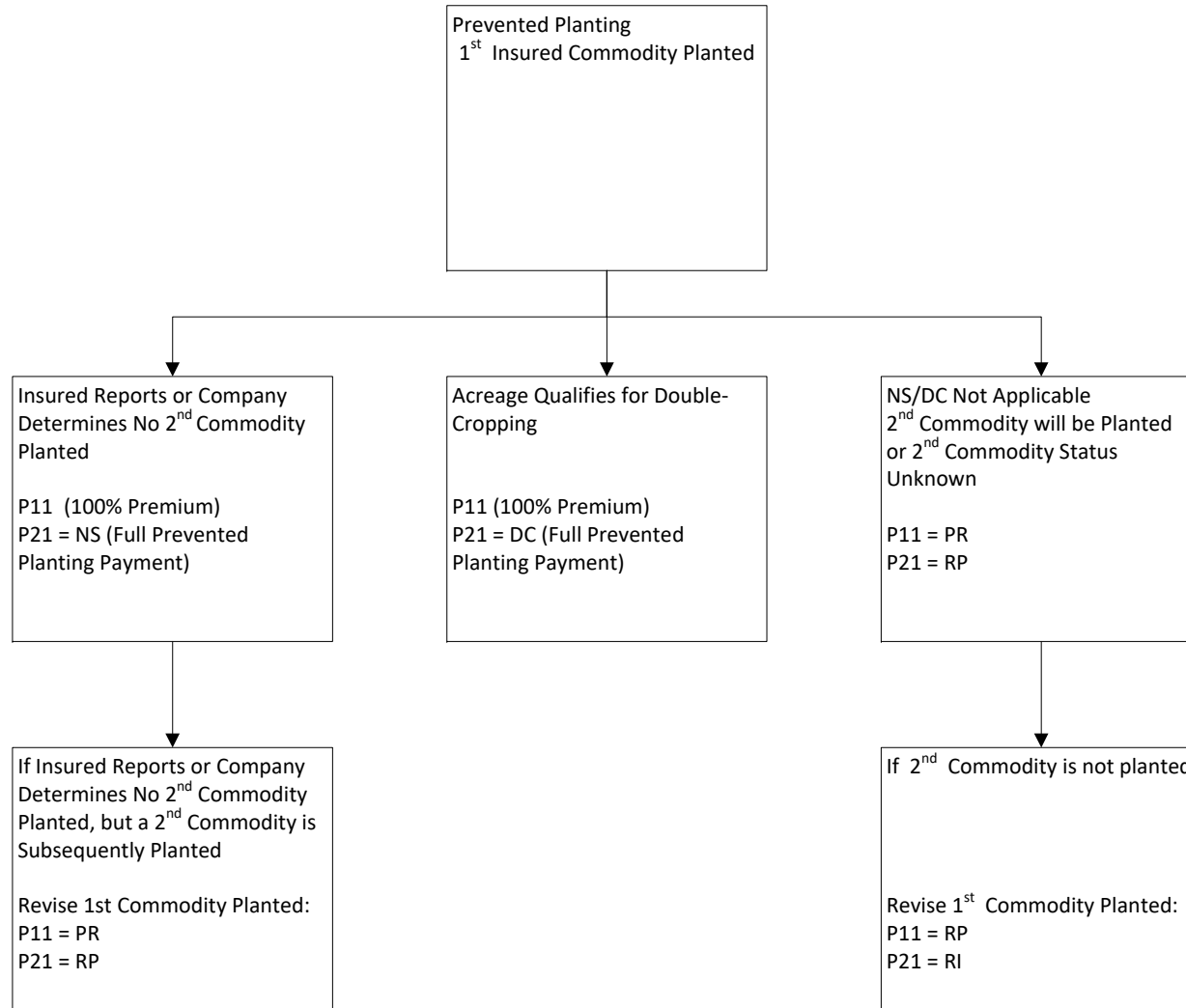


Exhibit Name: Commodity Processing Flow Diagram
Exhibit Number: P11-2
Record Name: Acreage
Record Code: P11

Reinsurance Year: 2014
Version: Approved
Release Date: 9/27/2018

Second Commodity Planted Processing (Planted Acreage)

