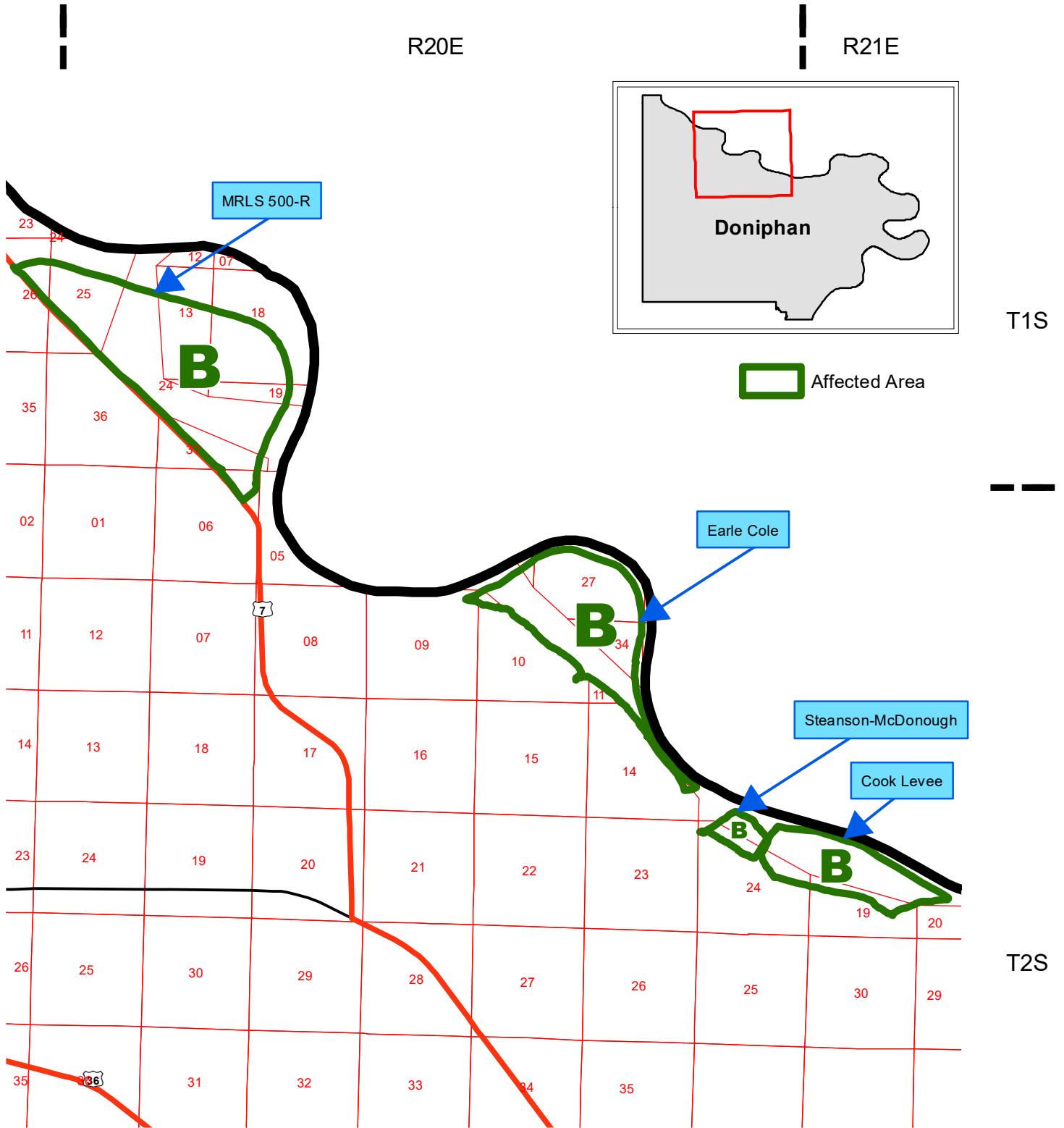
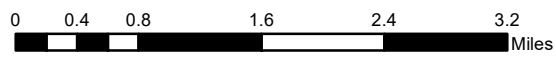


2021 Special Provisions Flood Statement Doniphan County, Kansas 6/30 Filing



This map is effective after the latter of the sales closing date or earliest planting date if the levee breaches are not repaired to prior specifications by that date.



Source: Risk Management Agency
 Map Created by: RMA, Topeka Regional Office, Topeka, KS
 Map Creation Date: 9/3/2020
 Map Projection: NAD 1983 UTM Zone 15N
 Projection: Transverse Mercator/North American 1983

The information displayed in this map is intended to serve as an aid in displaying data provided or stored by the Risk Management Agency. It does not modify, replace, or supersede any USDA published policy provisions or procedures.