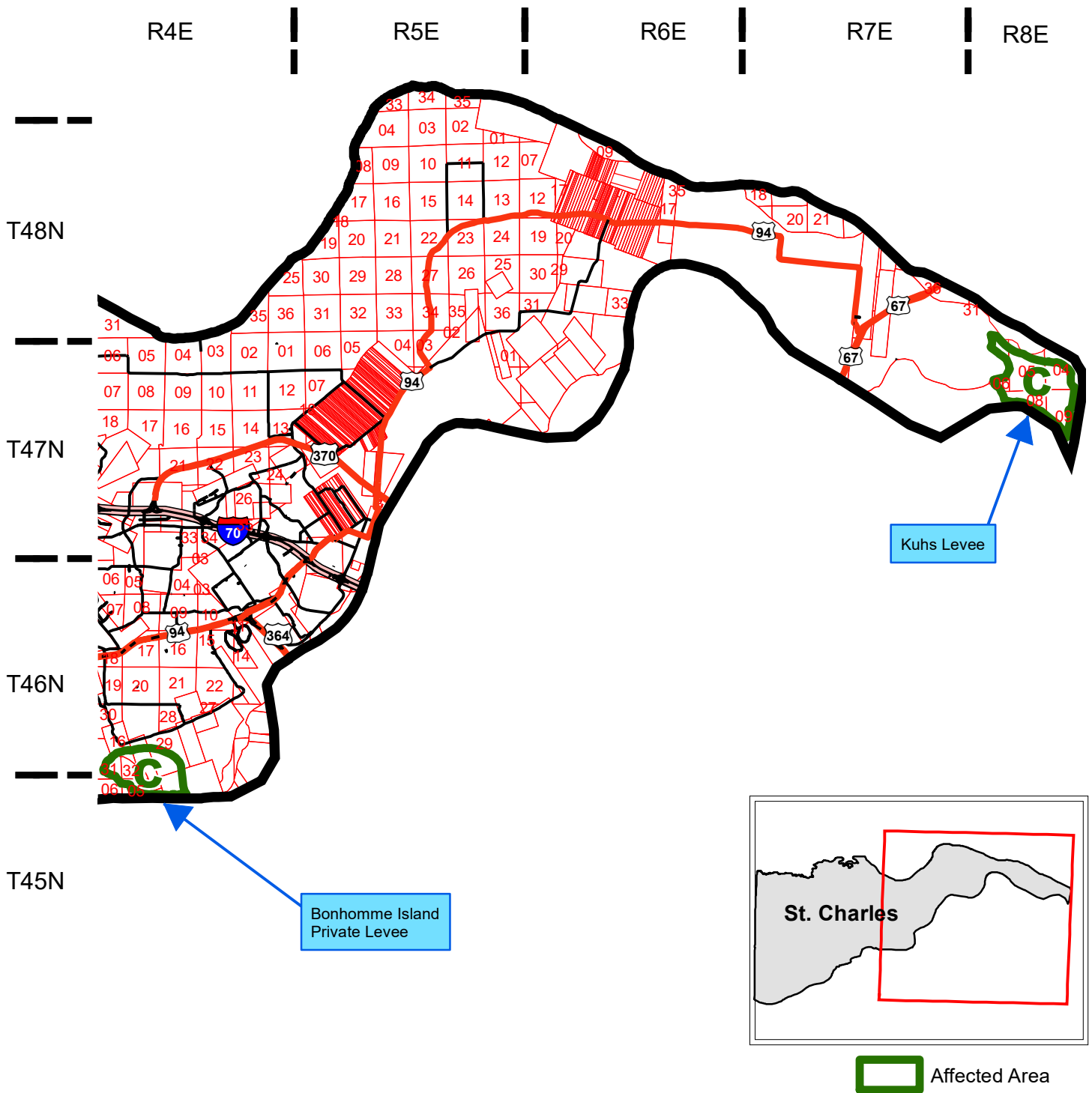
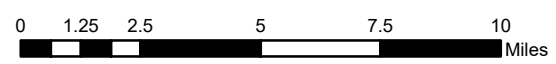


# 2020 Special Provisions Flood Statement St. Charles County, Missouri 11/30 Filing



This map represents land flooded by a breached levee system and the high risk classification the land will receive if the breached levee system is not repaired (either to prior specifications or temporary/permanent but not to prior specifications) by the latter of the sales closing date or earliest planting date.



Source: Risk Management Agency  
 Map Created by: RMA, Topeka Regional Office, Topeka, KS  
 Map Creation Date: 2/13/2020 8:37:53 AM  
 Map Projection: NAD 1983 UTM Zone 15N  
 Projection: Transverse Mercator/North American 1983

The information displayed in this map is intended to serve as an aid in displaying data provided or stored by the Risk Management Agency. It does not modify, replace, or supersede any USDA published policy provisions or procedures.