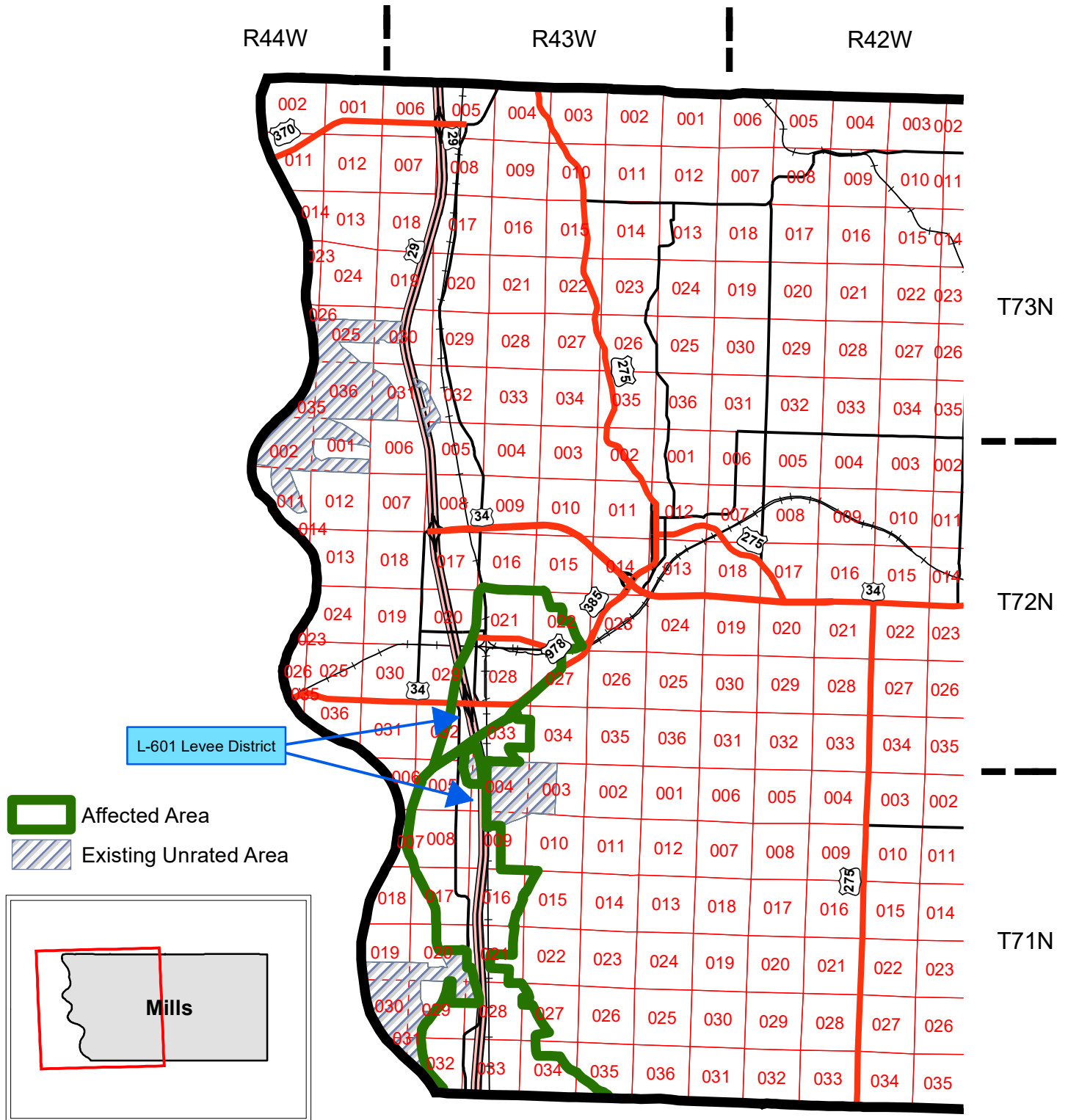


2020 Special Provisions Flood Statement

Mills County, Iowa

11/30 Filing



This map represents land flooded by a breached levee system that will receive the highest rate classification in the county if the breached levee system is not repaired (either to prior specifications or temporary/permanent, but not to prior specifications) by the latter of the sales closing date or earliest planting date. Please refer to the Actuarial Information Browser for crop and practice specific information on high-risk designations and subcounty rates.

Source: Risk Management Agency

Map Created by: RMA, St Paul Regional Office, St Paul, MN
 Map Creation Date: 3/5/2020 11:15:56 AM
 Map Projection: NAD 1983 UTM Zone 15N
 Projection: Transverse Mercator/North American 1983

The information displayed in this map is intended to serve as an aid in displaying data provided or stored by the Risk Management Agency. It does not modify, replace, or supersede any USDA published policy provisions or procedures.

